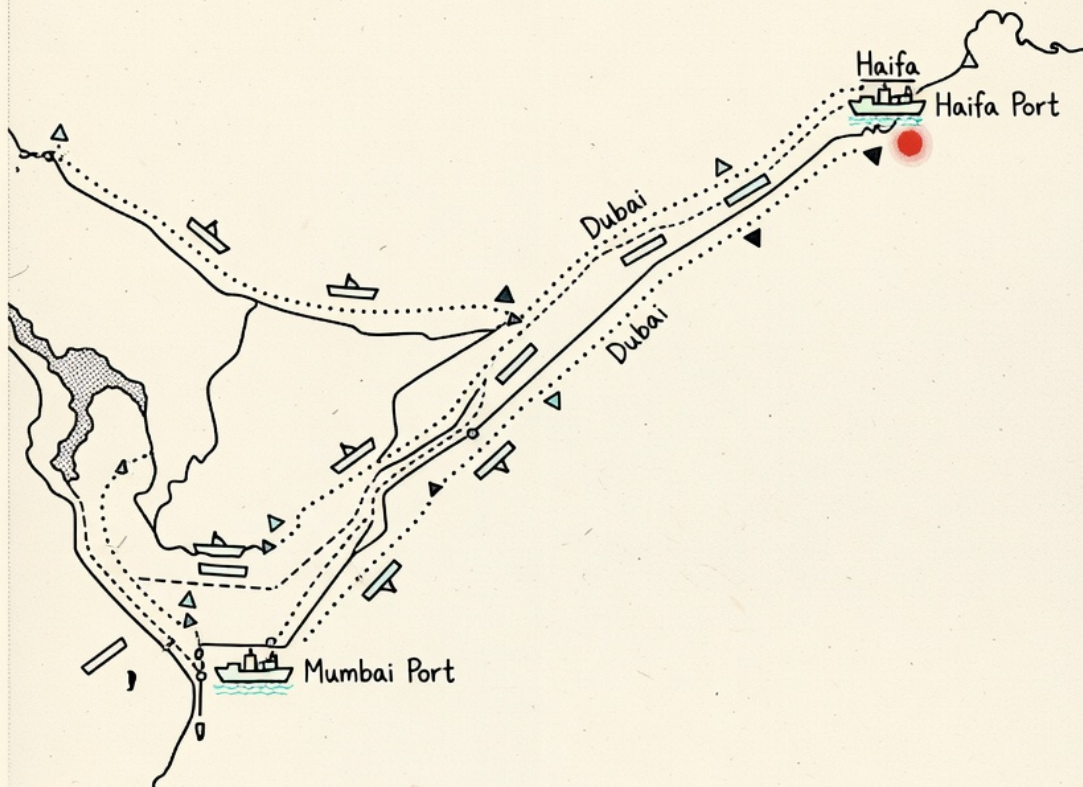


The Last Mile

\$MILE

PRINCIPAL CAST · LOCATIONS · STORYBOARD

THE LAST MILE



Someone put out the contract. He didn't know who.

A bMovies production

Directed by Arjun Mehta | Written by Priya Sharma | Starring Vikram Rao, Leila Abadi | Cinematography by Omar Khan

THE LAST MILE

\$MILE

Characters

4 PRINCIPALS

CHARACTERS

PROTAGONIST

late 30s

Elena has sharp cheekbones and tired hazel eyes, her dark hair often tied back in a practical, messy bun. Her wardrobe is utilitarian-worn jeans, oversized sweaters in muted grays and browns, a scuffed leather jacket that belonged to Theo. Her hands bear faint scars from years of manual work alongside her husband.



DEUTERAGONIST

early 40s

Theo is wiry and intense, with a weathered face and deep-set green eyes that seem to see through people. His dark hair is streaked with premature gray, often hidden under a worn cap, and he wears flannel shirts with rolled sleeves, jeans, and scuffed boots. A small scar above his left eyebrow hints at past confrontations.



CHARACTERS

SUPPORTING

mid 20s

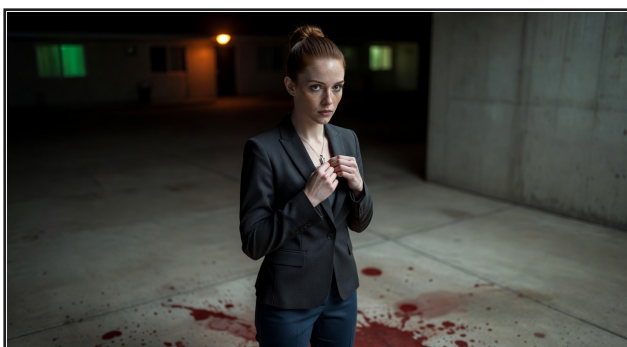
Kiran is slight but wiry, with warm brown skin and thick black hair often tucked under a beanie. He wears round glasses, graphic tees under hoodies, and carries a battered laptop bag slung across his shoulder. His sneakers are always untied, a small rebellion.



ANTAGONIST

early 40s

Lila is angular and poised, with pale skin and ash-blonde hair cut in a severe bob. She dresses in tailored blazers and dark slacks, always polished, but her eyes are cold, calculating. A silver pendant around her neck—a gift from Theo years ago—betrays her past connection.



Locations

3 SETTINGS

LOCATIONS



INT.

A cramped, dimly lit space in downtown Ithaca, cluttered with books, empty coffee mugs, and wilted plants on the windowsill. The walls are papered with faded floral patterns, peeling at the edges. A desk dominates, piled with papers and a flickering laptop, the only light source.

Heavy with grief, steeped in shadow, a muted beige and gray palette.

LOCATIONS



EXT.

A sprawling open space framed by ivy-clad Gothic buildings, littered with fallen autumn leaves in fiery oranges and golds. A makeshift stage sits center, draped with FutureFront banners, surrounded by uneven grass patches. The air carries a bite of early frost.

Vibrant yet tense, bathed in cold daylight with stark contrasts of light and shadow.

LOCATIONS



INT./EXT.

A run-down roadside motel on Ithaca's outskirts, its neon sign flickering 'VACANCY' in sickly green. Rooms are claustrophobic, with stained carpets, chipped Formica tables, and curtains that don't fully close. Outside, cracked asphalt and a rusted dumpster frame a view of barren fields.

Desolate and paranoid, drenched in sodium-vapor yellows and deep nocturnal blues.

Storyboard

5 FRAMES

STORYBOARD

FRAME 1



FRAME 2



STORYBOARD

FRAME 3



FRAME 4



STORYBOARD

FRAME 5

